

# Research Project: Cumulative social and economic impacts of CSG development in Wandoan



## DATA REPORT

# *INDICATORS OF CHANGE IN WANDOAN AND DISTRICT*

Statistical data updated in August 2022

Contact:

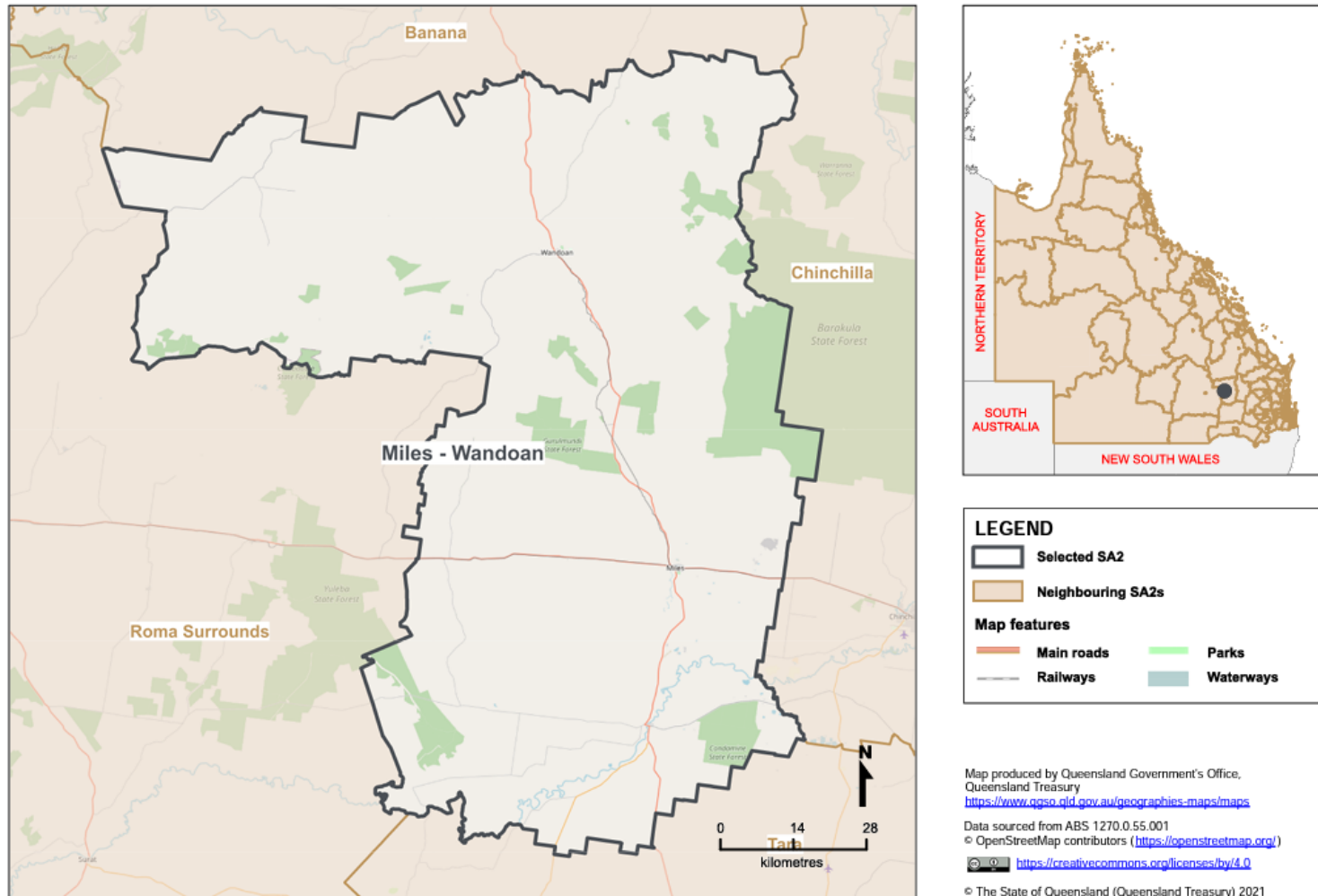
**Dr Katherine Witt** | Senior Research Fellow  
**Centre for Natural Gas**

The University of Queensland | Brisbane, QLD, 4072 AUSTRALIA

M: +61 7 3346 3442 | E: [k.witt@uq.edu.au](mailto:k.witt@uq.edu.au)

W: <https://natural-gas.centre.uq.edu.au/>

### Queensland Statistical Areas, Level 2 (SA2), 2021 - Miles - Wandoan (ASGS Code 307011175)



### Miles – Wandoan SA2 boundary

Source: <https://www.qgso.qld.gov.au/issues/10696/qld-sa2-asgs-2021-miles-wandoan.pdf>



**Wandoan urban centre and locality (UCL) boundary**

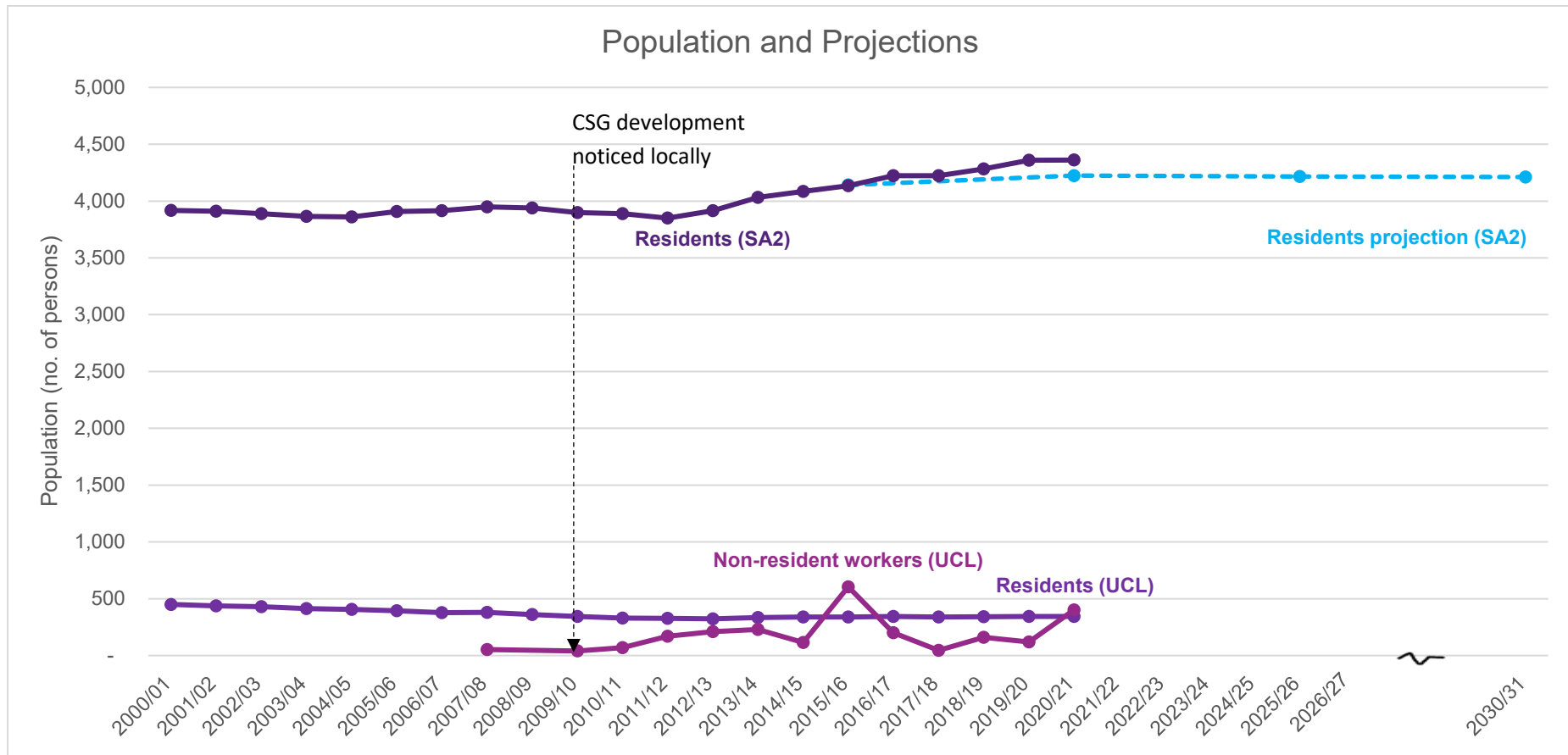
Source: <https://www.abs.gov.au/census/find-census-data/quickstats/2011/UCL322127>



**Wandoan postcode boundary 4419**

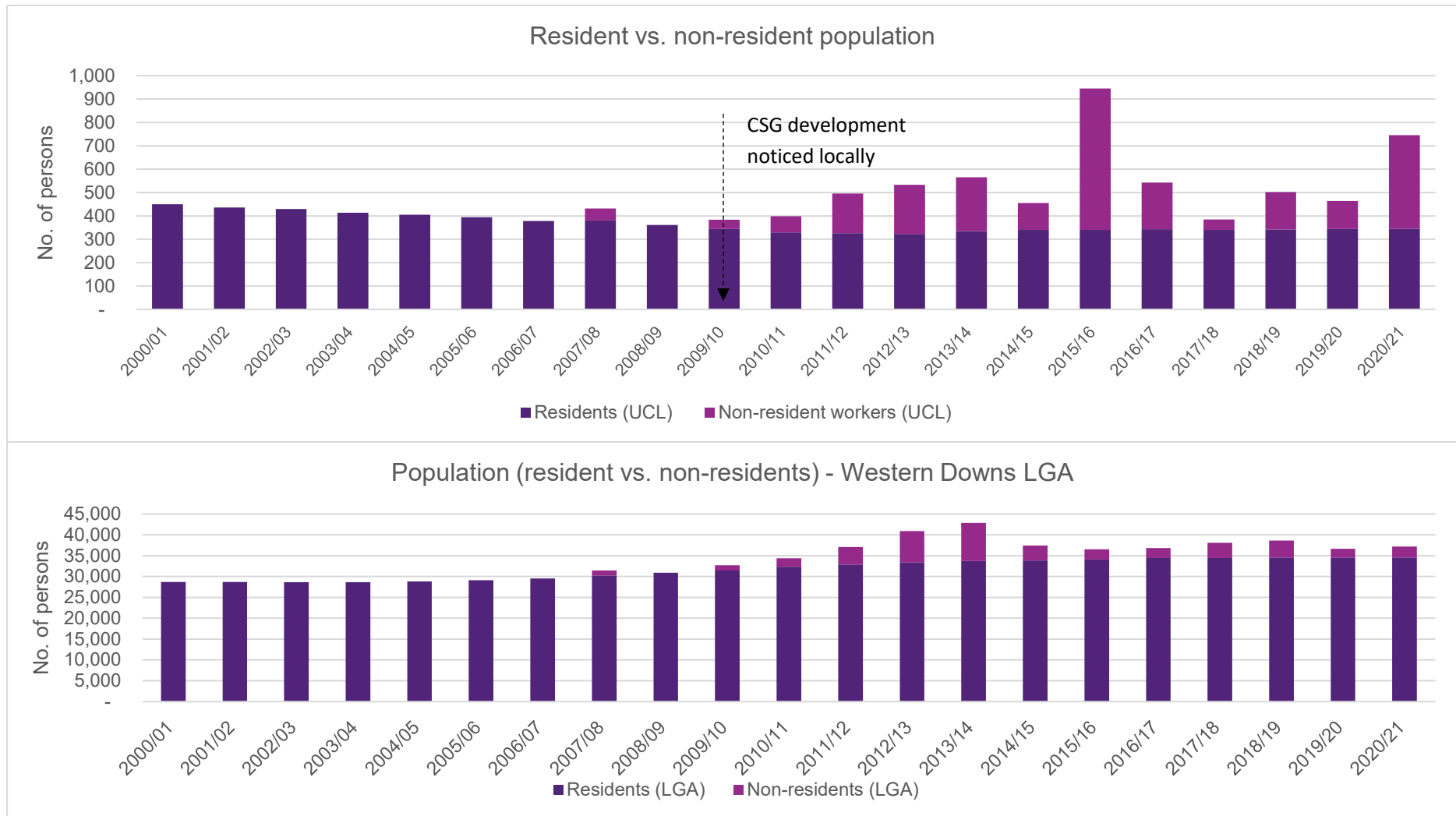
Source:

<https://www.google.com.au/maps/place/Queensland+4419/@-25.8724928,149.444575,9z/data=!3m1!4b1!4m2!3m1!1s0x6bbf2fe593daa4d3:0x1c00eef4d3091470>



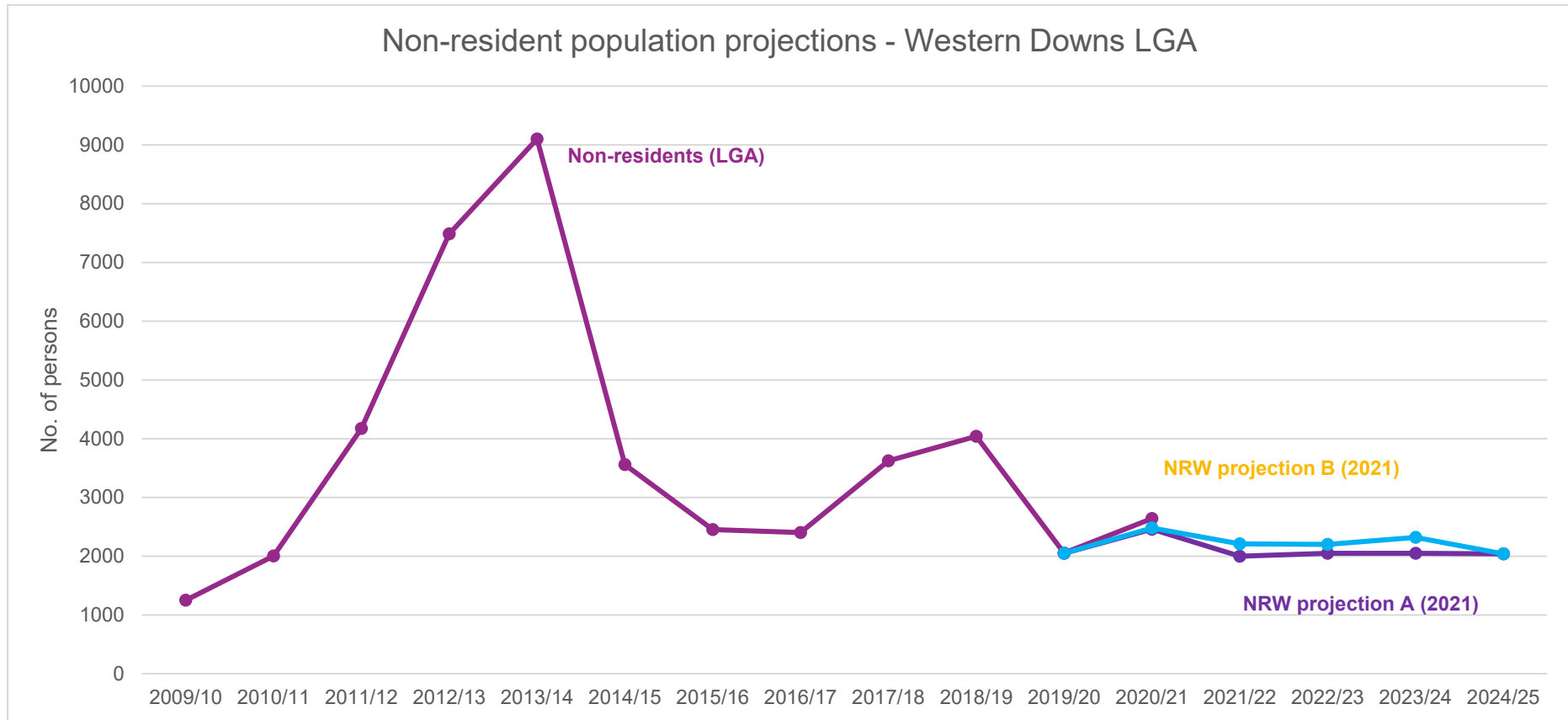
Data notes

- UCL non-resident workers population estimate from QGSO 'Surat Basin Population Report' (ASGS 2016); 2021 version available here: <https://www.qgso.qld.gov.au/statistics/theme/population/non-resident-population-queensland-resource-regions/surat-basin>
- UCL resident population estimate from the QGSO table 'Estimated resident population (a) by urban centre and locality (b), Queensland, 2001 to 2021p' (ASGS 2016), <http://www.qgso.qld.gov.au/products/tables/erp-ucl-qld/index.php>
- SA2 population estimate from the QGSO table 'Estimated resident population by statistical area, level 2 (SA2), Queensland, 2006 to 2021p' (ASGS 2016), <http://www.qgso.qld.gov.au/subjects/demography/population-estimates/tables/erp-sa2-qld/index.php>
- Population projection (2019 edition) from QGSO table 'Projected population (medium series), by statistical area level 2 (SA2), SA3 and SA4, Queensland, 2011 to 2041' (ASGS 2001), <http://www.qgso.qld.gov.au/subjects/demography/population-projections/tables/proj-pop-medium-series-sa2-sa3-sa4-qld/index.php>



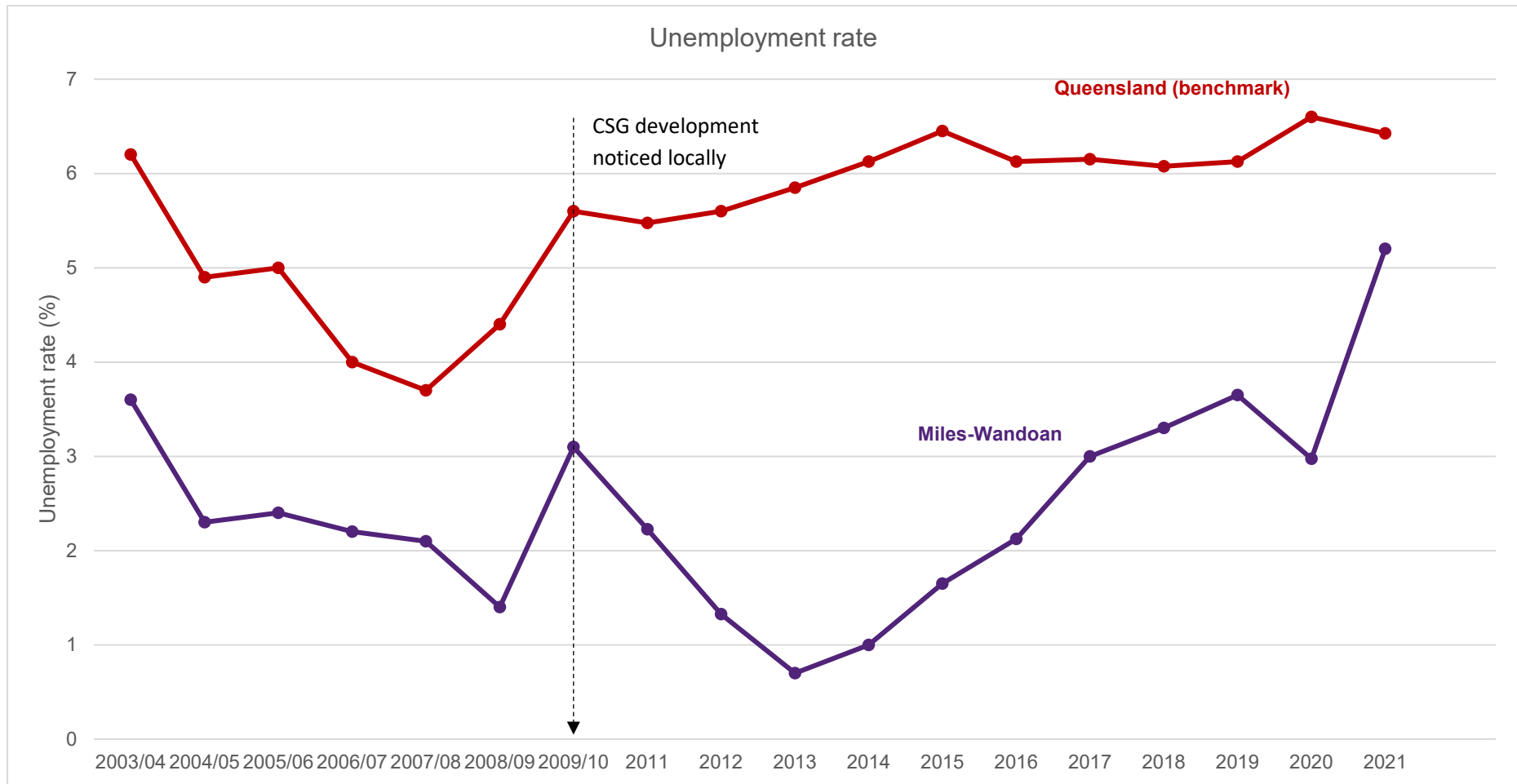
Data notes

- Population and non-resident worker population estimates for UCL and Western Downs LGA from the QGSO 'Surat Basin Population Report' (ASGC 2016); 2021 version available here: <https://www.qgso.qld.gov.au/statistics/theme/population/non-resident-population-queensland-resource-regions/surat-basin>
- Data missing for 2008/09 non-resident worker population



Data notes

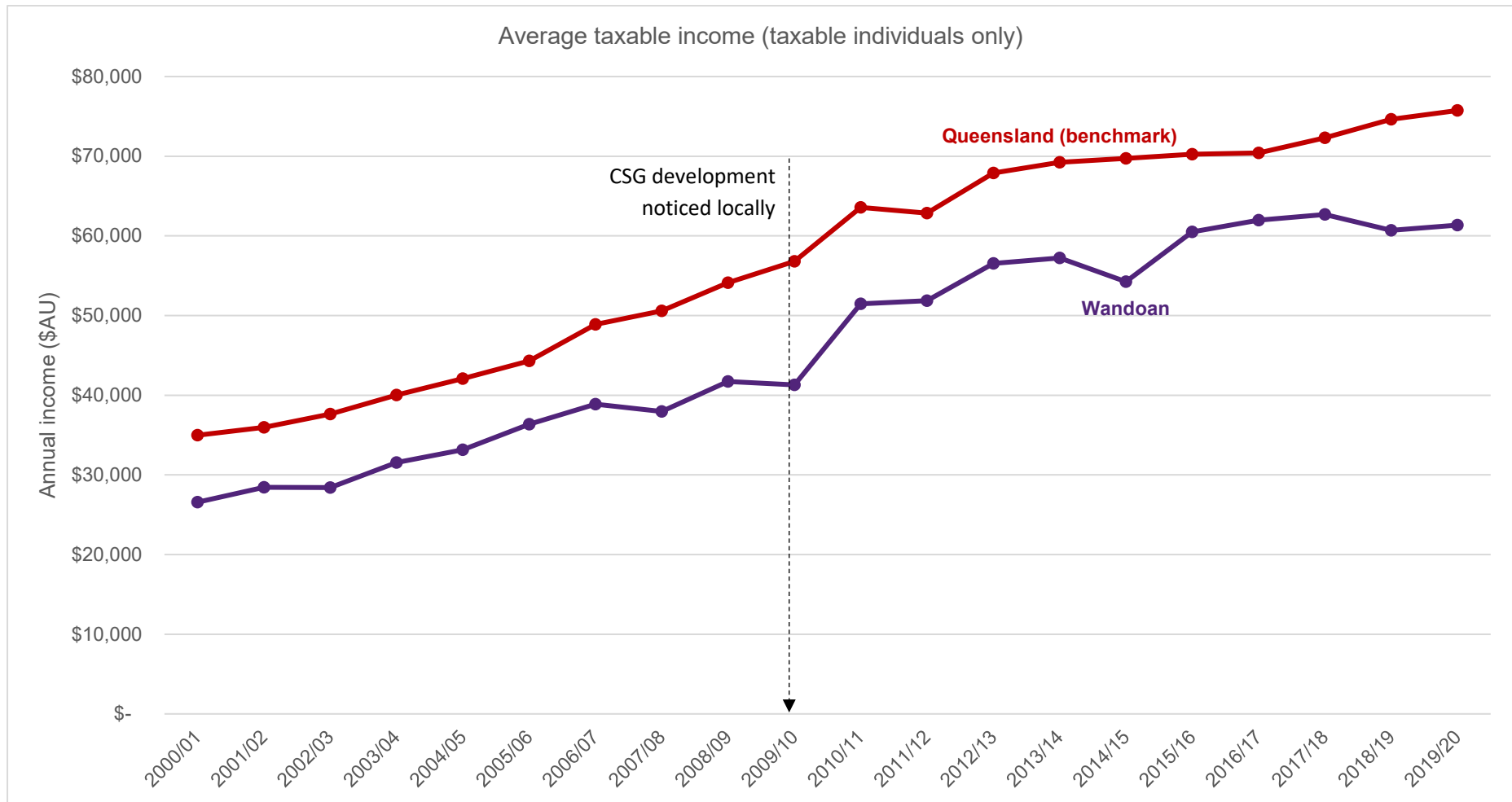
- Non-resident population, Queensland resource regions: Surat Basin: <https://www.qgso.qld.gov.au/statistics/theme/population/non-resident-population-queensland-resource-regions/surat-basin>
- Non-resident workers projections (2021) by LGA from QGSO report 'Surat Basin: Non-resident population projections, by local government area (LGA), 2021 to 2025', <https://www.qgso.qld.gov.au/statistics/theme/population/non-resident-population-queensland-resource-regions/surat-basin>
- Series A projection is based on the number of non-resident workers on-shift who were engaged in existing resource operations at June 2020. The projection takes into account future changes to those operational workforces as advised by company sources, as well as the estimated construction and operational workforces of Category A projects (i.e. those that are approved and have reached financial close).
- Series B projection includes the Series A projection plus projected growth in the non-resident population arising from Category B projects (those that have an environmental impact statement (EIS) approved, and are awaiting other approvals and/or financial close).



Data notes

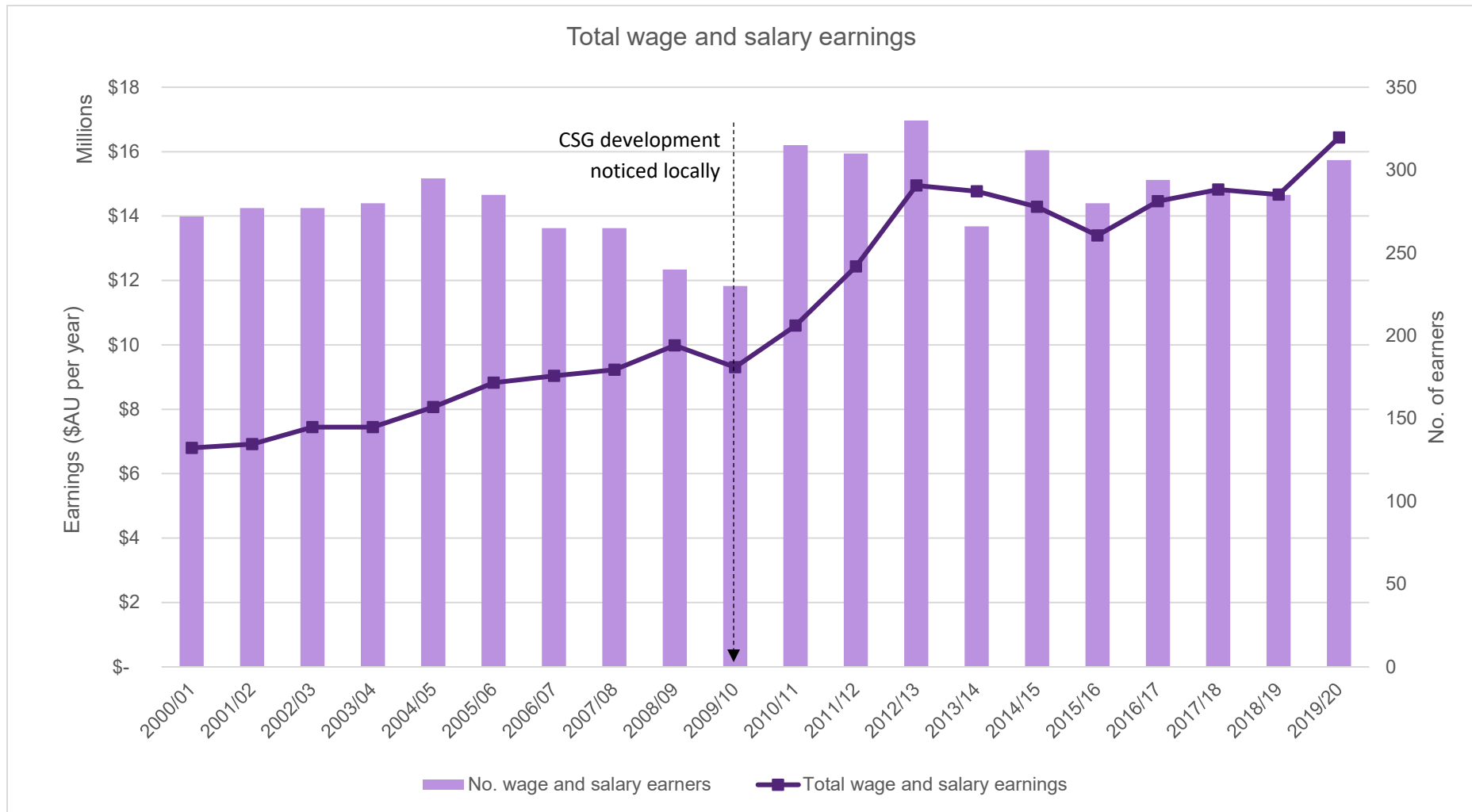
- 2001-2008 based on SLA statistical boundary; Source: QGSO Regional Database Archived dataset 'Labour Force - Small Area (Qtr Ended 31 Dec 2002 to Qtr Ended 31 Dec 2008) [DEEWR, Small Area Labour Markets Australia] (ASGC 2001)', <http://www.qgso.qld.gov.au/products/tables/qld-regional-database/index.php>
- 2009-2010 data from DEEWR file 'Unemployment salm\_data\_files\_2008-2013'
- 2010-2021 based on SA2 statistical boundary; Source: QGSO Regional Database dataset 'Labour Force - Small Area (Qtr Ended 31 Dec 2010 to Qtr Ended 31 Dec 2021) [Department of Jobs and Small Business] (ASGS 2016)', <http://www.qgso.qld.gov.au/products/tables/qld-regional-database/index.php>





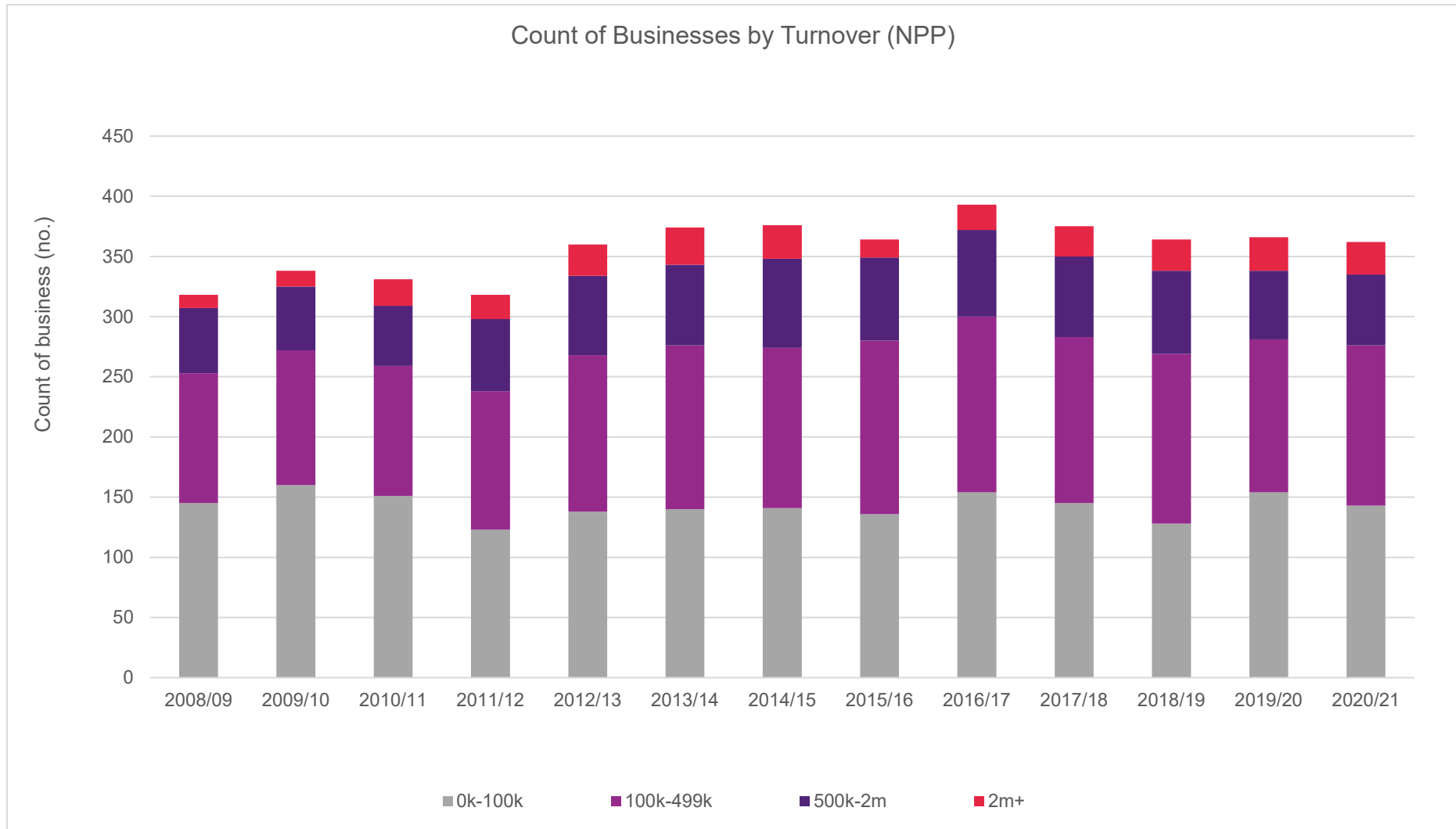
Data notes

- Source: Australian Taxation Office (ATO), Research and Statistics, <https://www.ato.gov.au/>
- Average taxable incomes reported by ATO until 2009 excluded losses. Averages from 2010 include all taxable incomes including incomes of zero and losses.
- Data relates to Wandoan postcode 4419
- Original data – no discounting applied
- Due to ATO data publishing cycles, 2020/21 data will be included in the 2022 Wandoan booklet



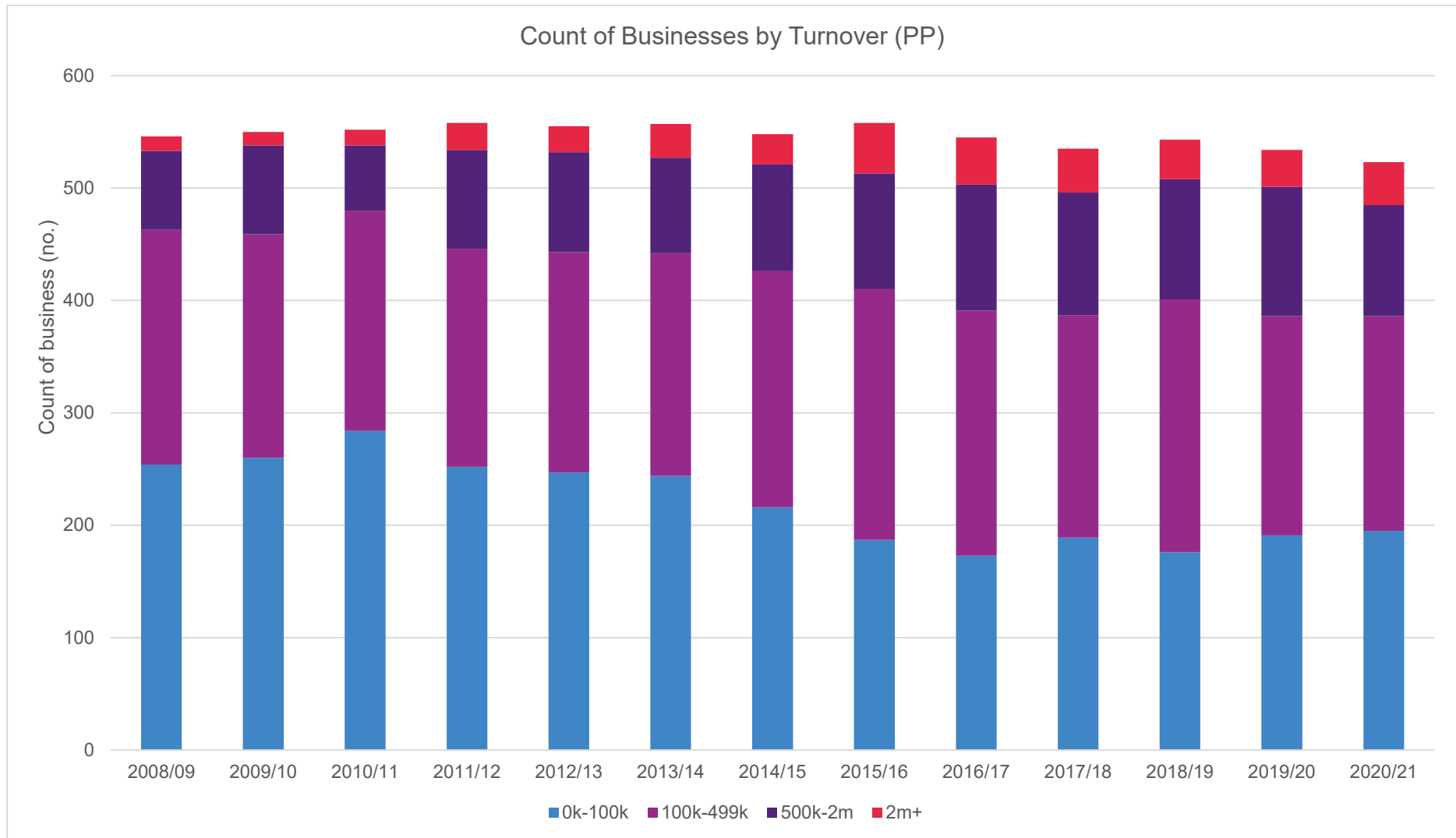
Data notes

- Source: Australian Taxation Office (ATO), Research and Statistics, <https://www.ato.gov.au/>
- Data relates to Wandoan postcode 4419
- Original data – no discounting applied
- Due to ATO data publishing cycles, 2020/21 data will be included in the 2022 Wandoan booklet



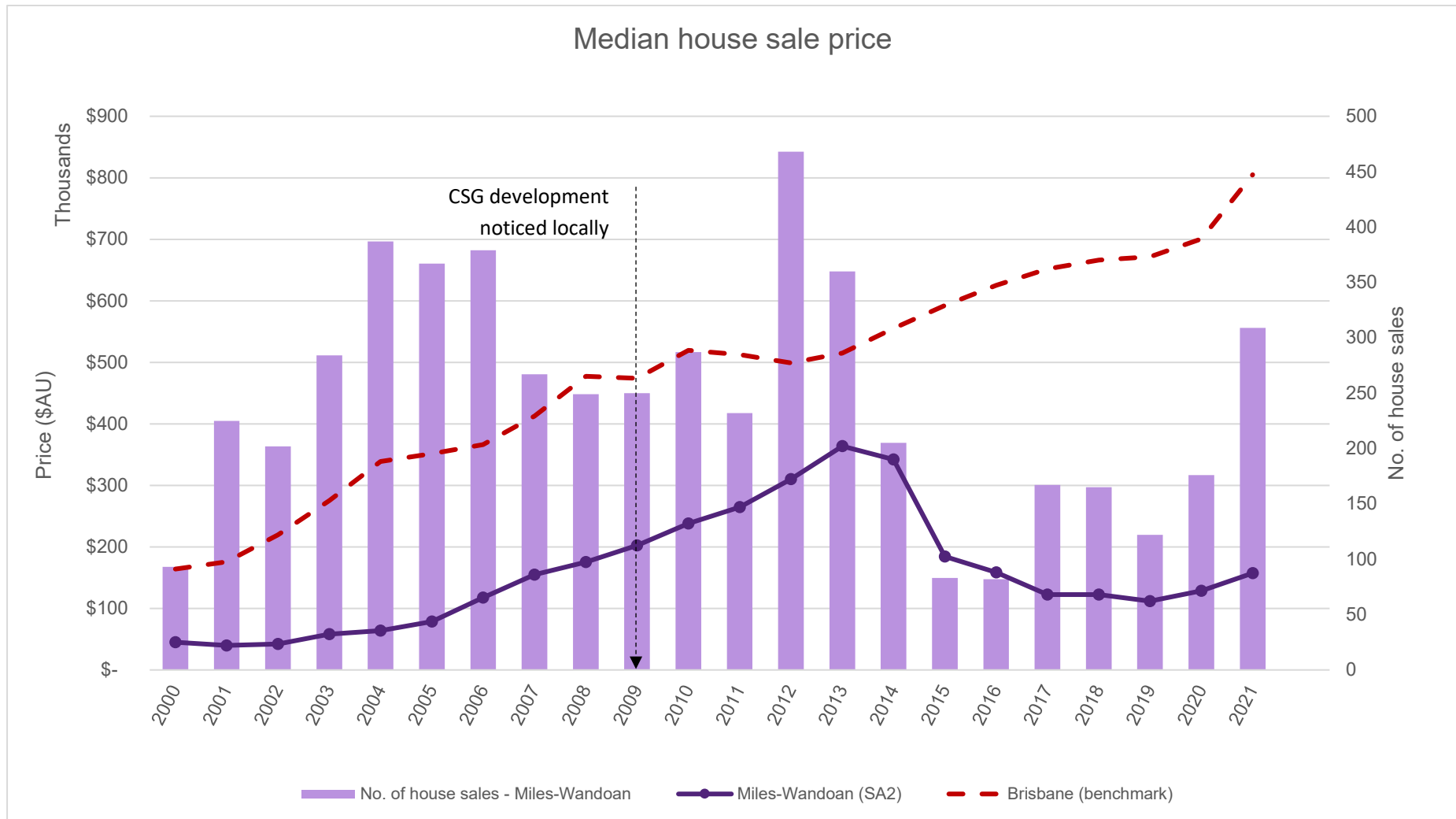
Data notes

- Source: Australian Bureau of Statistics, Cat. 8165, <https://www.abs.gov.au/>
- Data based on SA2 (Miles - Wandoan) statistical boundary



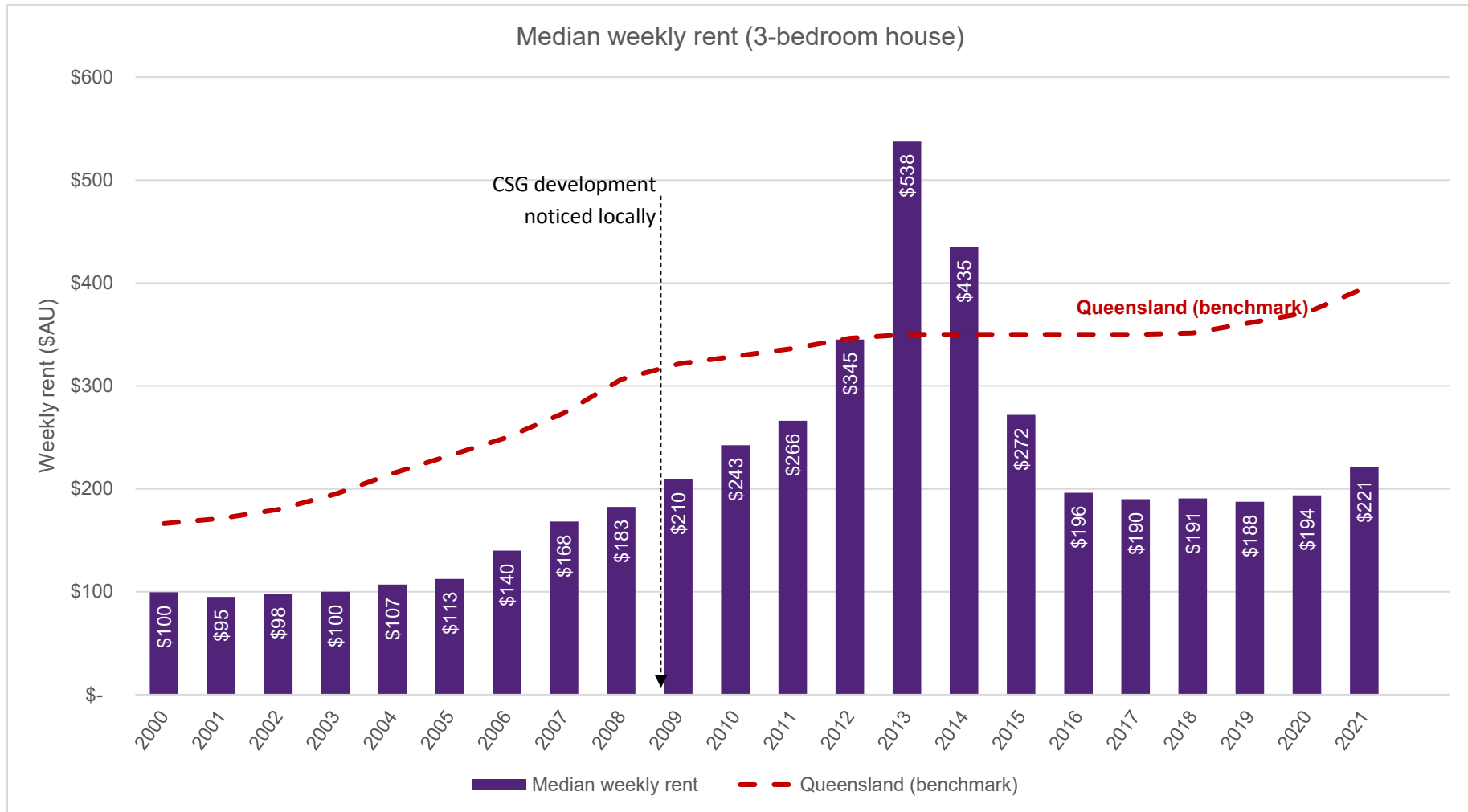
Data notes

- Source: Australian Bureau of Statistics, Cat. 8165, <https://www.abs.gov.au/>
- Data based on SA2 (Miles - Wandoan) statistical boundary



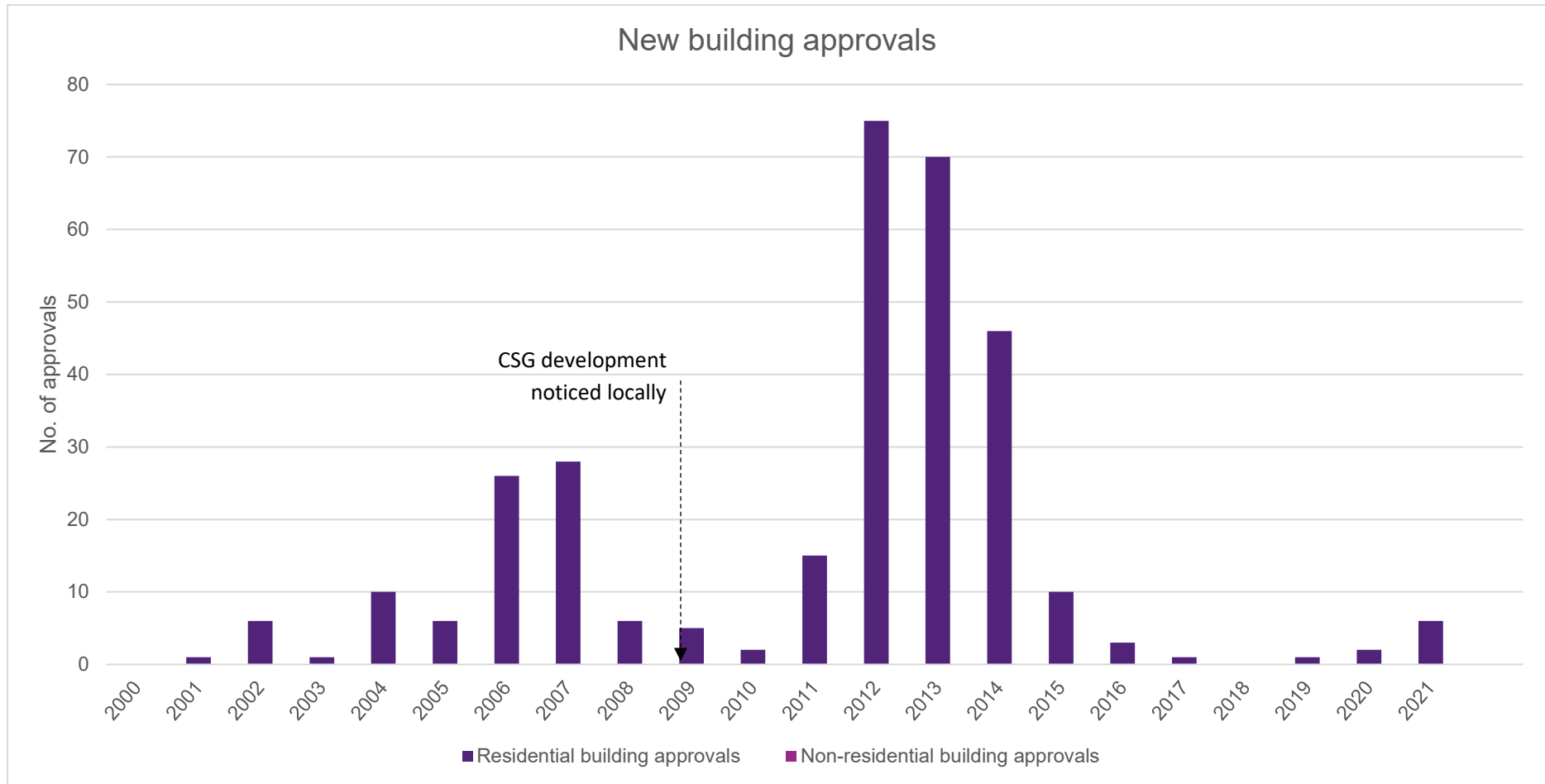
Data notes

- Source: QGSO Regional Database dataset 'Residential land and dwelling sales (Year Ended 30 Sep 2000 to Year Ended 31 Dec 2021) [DNRM] (ASGS 2016 for 2000-2020; ASGS 2021 for 2021)', <http://www.qgso.qld.gov.au/products/tables/qld-regional-database/index.php>
- Median house sale price and house sales based on SA2 (Miles-Wandoan) statistical boundary



Data notes

- Source: QGSO Regional Database dataset 'Median rent (Year Ended 30 Sep 1990 to Year Ended 31 Dec 2021) [RTA] (ASGS 2016 for 2000-2020; ASGS 2021 for 2021)', <http://www.qgso.qld.gov.au/products/tables/qld-regional-database/index.php>
- Rent value data based on SA2 (Miles-Wandoan) statistical boundary



Data notes

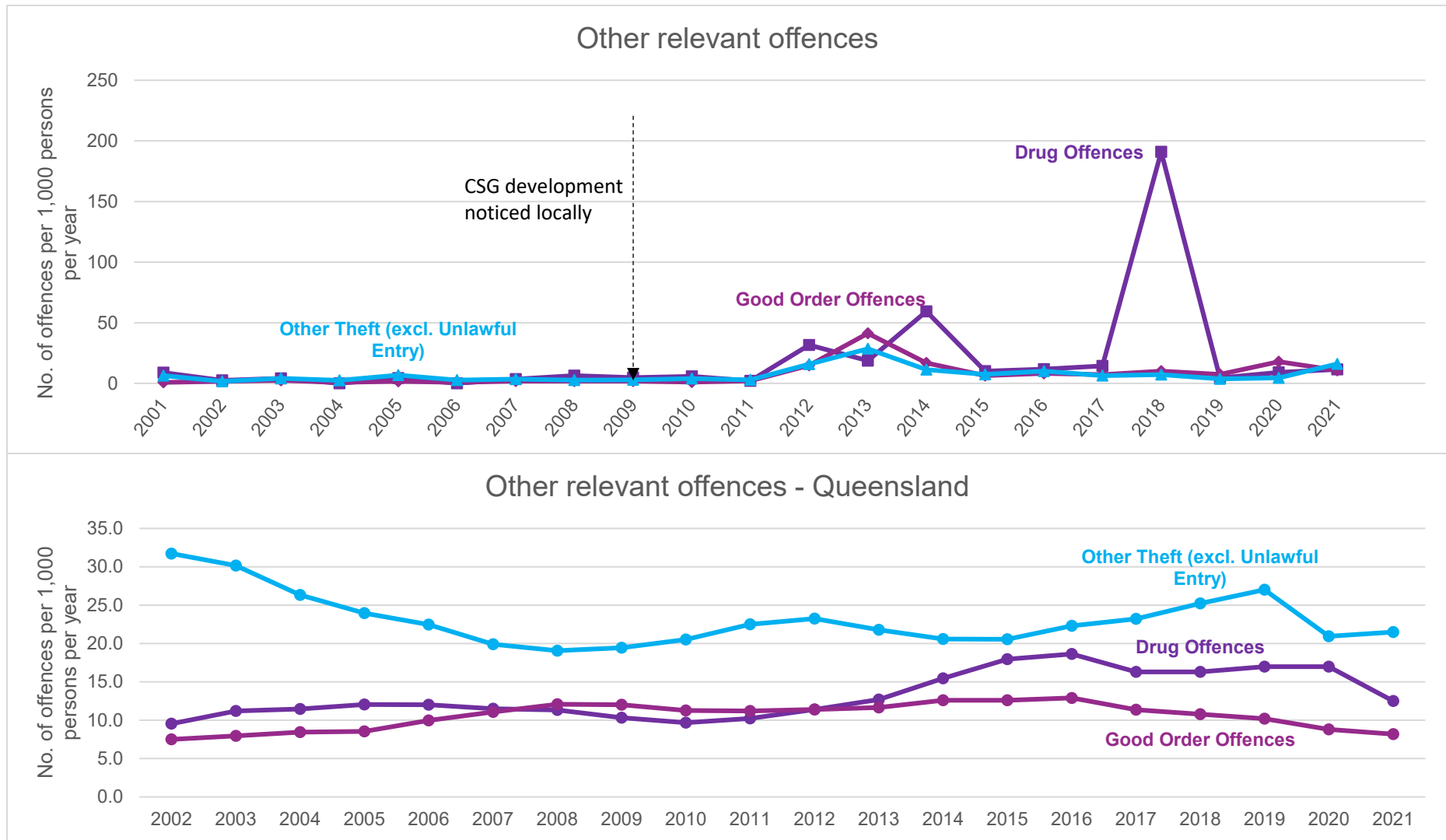
- Source: QGSO Regional Database dataset 'Building Approvals (Jul 2001 to Dec 2021) [ABS 8731.0] (ASGS 2016 for 2000-2020; ASGS 2021 for 2021)', <http://www.qgso.qld.gov.au/products/tables/qld-regional-database/index.php>
- Data based on SA2 (Miles-Wandoan) statistical boundary
- Approvals shown for private buildings only; public developments are excluded
- Private non-residential building approvals remained at zero between 2002 and 2021



Data notes

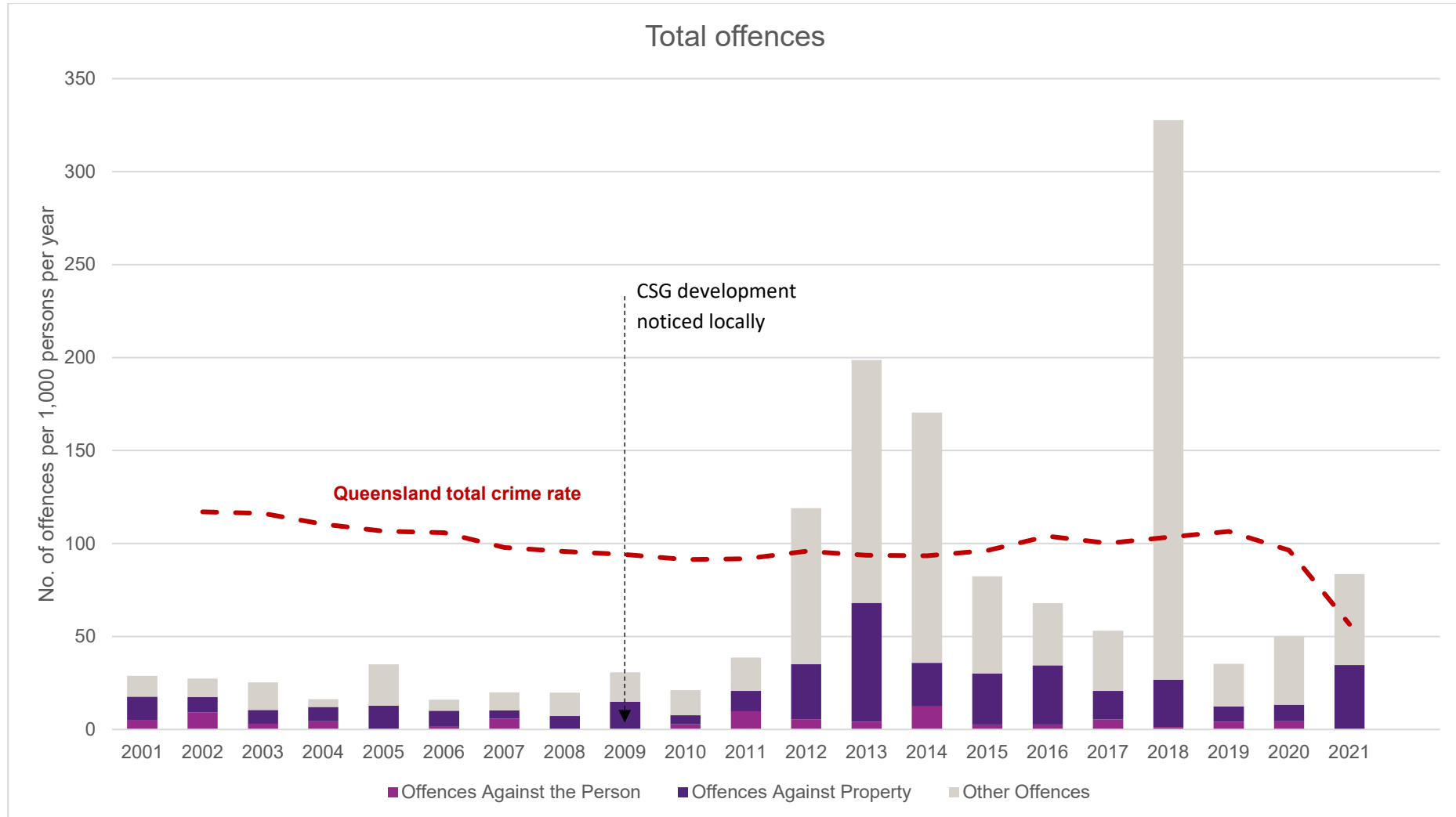
- Source: Queensland Police Service (QPS), <https://www.police.qld.gov.au/online/data/>
- Crime rate data (per 100,000 people) obtained by QPS Division and Queensland State; data was adjusted to be presented as number of offences per 1,000 people per year





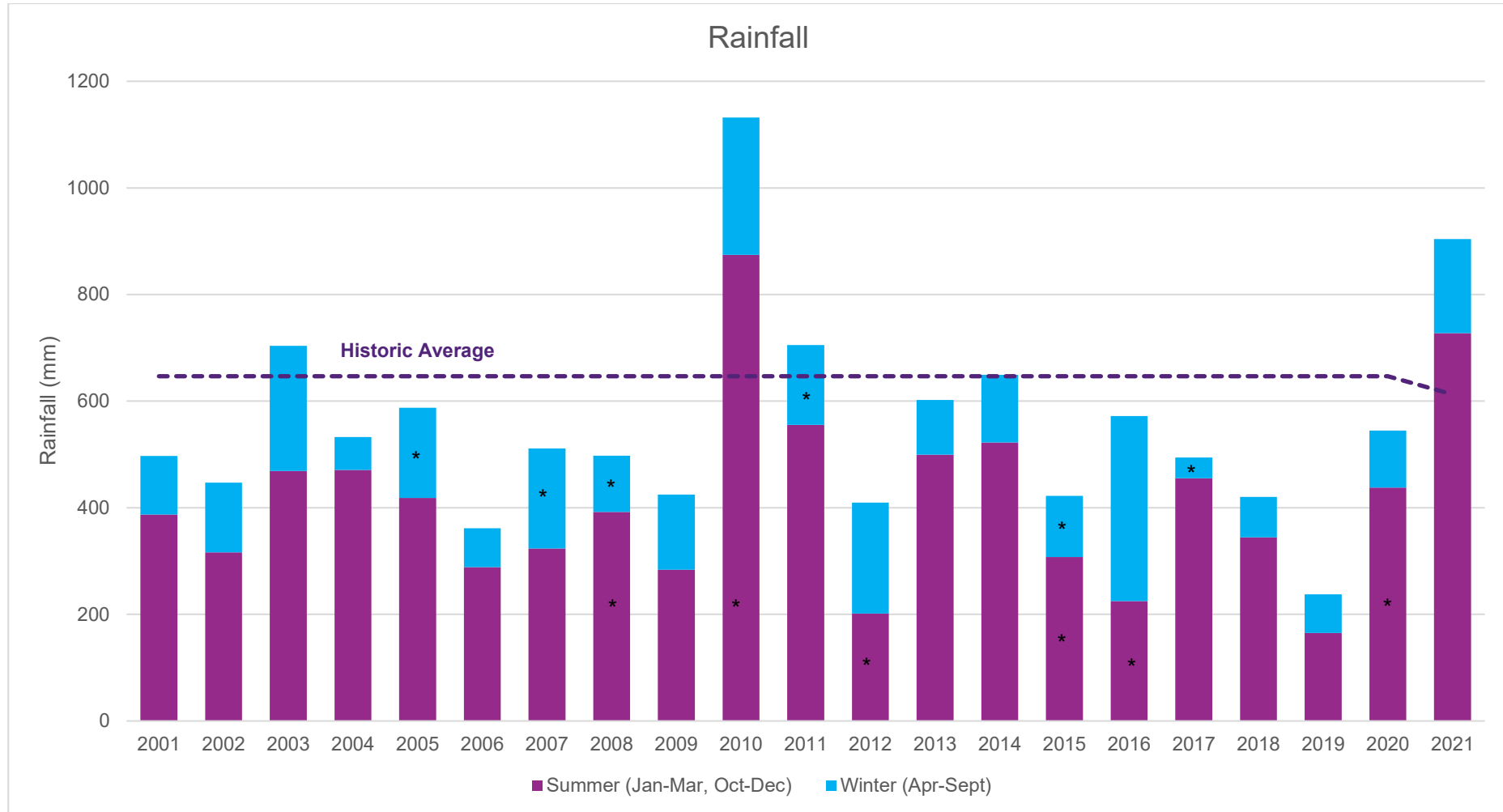
Data notes

- Source: Queensland Police Service (QPS), <https://www.police.qld.gov.au/online/data/>
- Crime rate data (per 100,000 people) obtained by QPS Division and Queensland State; data was adjusted to be presented as number of offences per 1,000 people per year



Data notes

- Source: Queensland Police Service (QPS), <https://www.police.qld.gov.au/online/data/>
- Crime rate data (per 100,000 people) obtained by QPS Division and Queensland State; data was adjusted to be presented as number of offences per 1,000 people per year



**Data notes**

- Source: Bureau of Meteorology Climate Data online, <http://www.bom.gov.au/climate/data/>
- Rainfall observations reported for Gilgilgulul Rainfall Station (2001-2020) and Gilgilgulul TM (2021)
- Where missing data is indicated, gaps exist in daily rainfall observations
- (\*) Missing data



## Contact details

**Dr Katherine Witt**

M +61 3346 3442

E [k.witt@uq.edu.au](mailto:k.witt@uq.edu.au)

W <https://natural-gas.centre.uq.edu.au/>